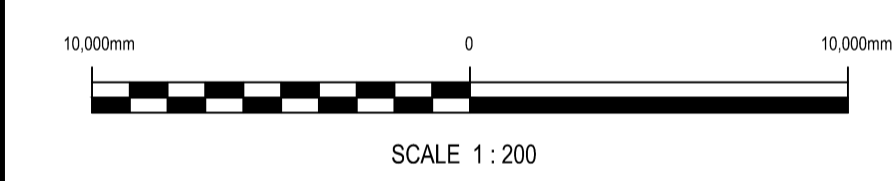


- LEGEND**
- EXISTING FOUL SEWER ---
 - EXISTING STORM SEWER ---
 - EXISTING COMBINED SEWER ---
 - EXISTING OVERFLOW SEWER ---
 - EXISTING KERB LINE
 - RED LINE BOUNDARY
 - EXISTING GULLY GY
 - NEW GULLY G
 - NEW STORM SEWER CONNECTION ---
 - HYDRANT FH



REV	DATE	DESCRIPTION	D	C	A
B	27.10.23	MINOR REVISIONS, REMOVAL OF BLUE TEXT	AMC	DR	T.H
A	06.10.23	FIRST ISSUE	AMC	DR	T.H

PROJECT No.	STAGE
533272	PRELIMINARY

COPYRIGHT RESERVED - THIS DRAWING IS NOT TO BE USED FOR A PURPOSE OTHER THAN THAT FOR WHICH IT HAS BEEN ISSUED BY NICHOLAS O'DWYER LTD. NOR IS IT TO BE COPIED OR REPRODUCED IN ANY MANNER WITHOUT WRITTEN CONSENT.

15 Downshire Road,
Newry, BT34 1EE,
Northern Ireland
T +44 (0)28 3026 6915
E newry@nodwyer.com
W www.nodwyer.com
an RSK company

CLIENT
LOUTH COUNTY COUNCIL

PROJECT
WESTGATE 2040

TITLE
**DRAINAGE PLAN
SHEET 3 OF 6**

SCALES @ A1	DRAWN	CHECKED	APPROVED
1:200	PMCDONALD	D REDDY	D REDDY
	DATE	DATE	DATE
	06.10.2023	06.10.2023	06.10.2023

SUITABILITY CODE	SUITABILITY DESCRIPTION
S1	PLANNING

DRAWING No.	REVISION
LOUX3001-P-000-403	B